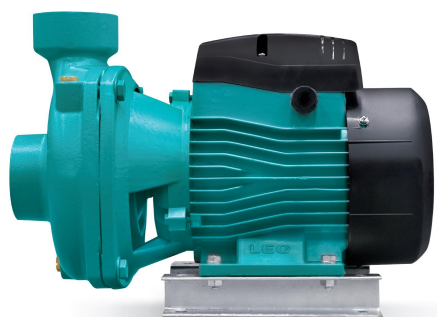


ACm220B2 Centrifugal cast iron pump



Application

- Transfer of clear water or other liquids chemically and physically comparable to water
- Suitable for industrial use and water supply, overpressure for fire system, garden irrigation, air conditioning system, circulation and overpressure, etc ...

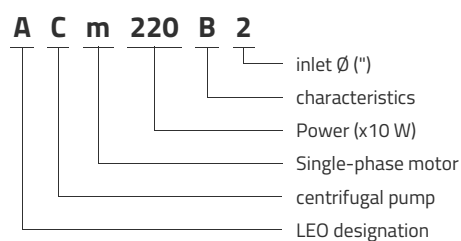
Pompe

- Special anti-rust treatment (cataphoresis) for the cast iron pump body and the lantern
- AISI 304 stainless steel shaft
- Maximum liquid temperature: +40°C
- Maximum suction height: 8 m

Moteur

- Single-phase motor
- Integrated thermal protection
- Insulation class: F
- Protection class: IPX4
- Maximum ambient temperature: +40°C

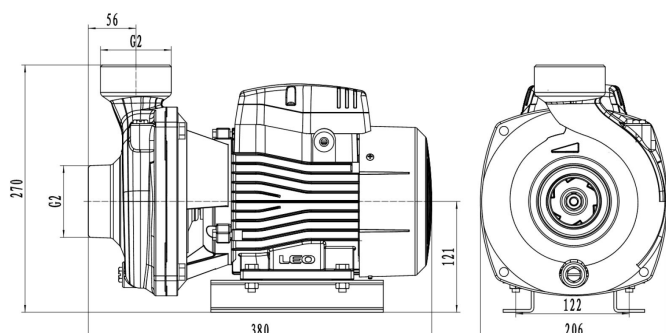
Identification codes



Technical data

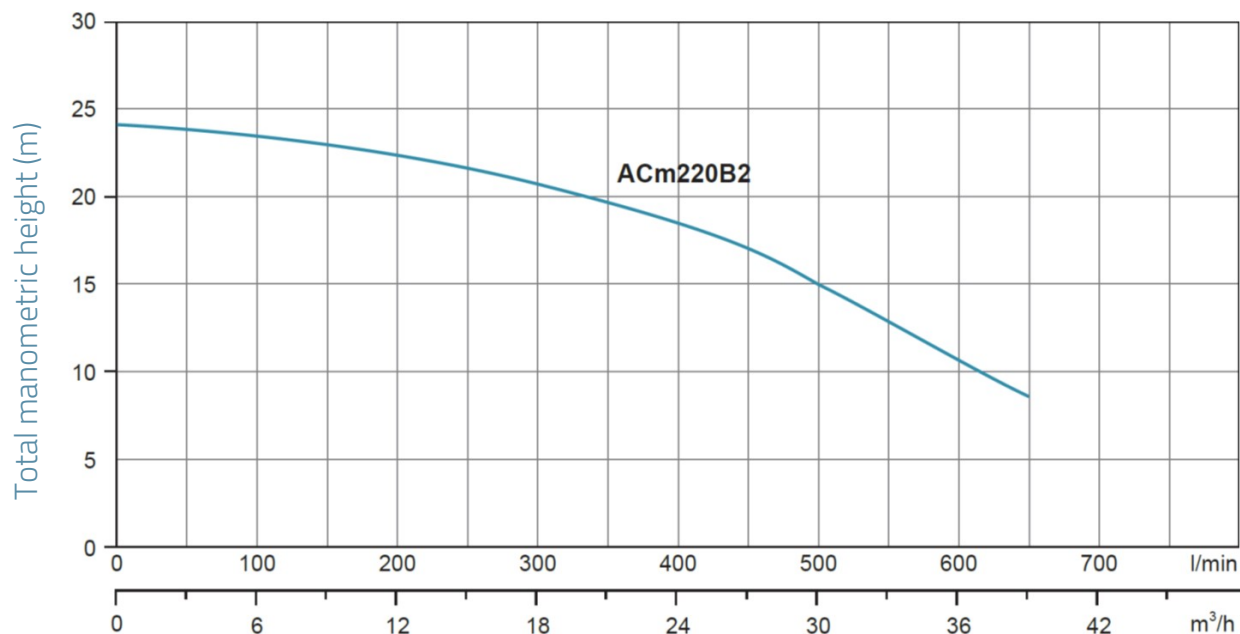
MODEL	kW	Q (m ³ /h)	0	6	12	18	19	24	30	36	38.9
		Q (l/min)	0	100	200	300	317	400	500	600	648
ACm220B2	2.2	23.9	23.8	22.7	21.1	20.9	18.6	15.2	10.1	8.2	

Dimensions



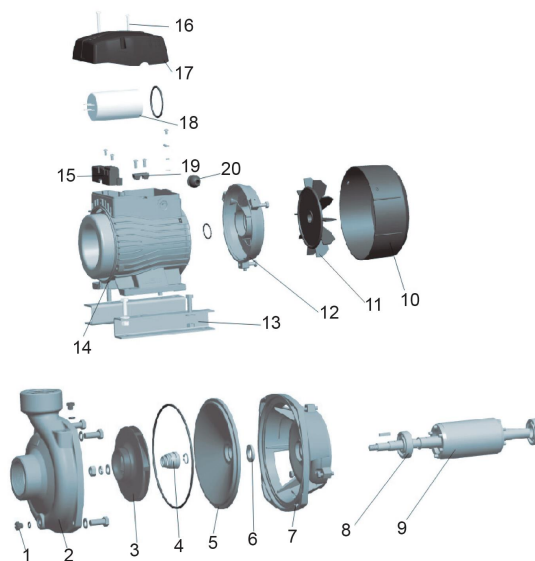
MODEL	DN1	DN2	L	W	H	W1	H1
ACm220B2	2	2	380	206	270	122	121

Hydraulic performance



Exploded view

No.	Type
1	Plug
2	Pump body
3	Impeller
4	Mechanical seal
5	Pump bottom
6	O-ring
7	Lantern
8	Bearing
9	Rotor
10	Fan cover
11	Fan
12	Rear cover
13	Leg
14	Stator
15	Terminal board
16	Screw
17	Electric box cover
18	Capacitor
19	Cable clamp
20	Passage for the wires



Packaging

MODEL	Weight (kg)	Length L (mm)	Width W (mm)	Height H (mm)
ACm220B2	23	416	248	286

