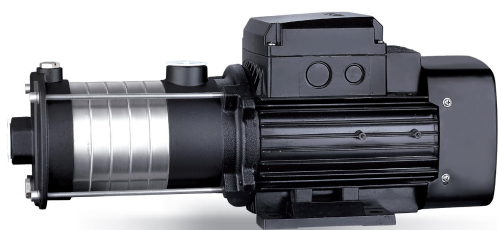


## ECH2 Horizontal multistage stainless steel pump



ECH

### Application

- Water supply for tall buildings, pumping stations, overpressure
- Washing stations, heating water circulation, air conditioning water circulation, water treatment systems
- Ultrafiltration, reverse osmosis, distillation systems, municipal swimming pools
- Irrigation: sprinkling, drip
- Industry
- Fire fighting systems

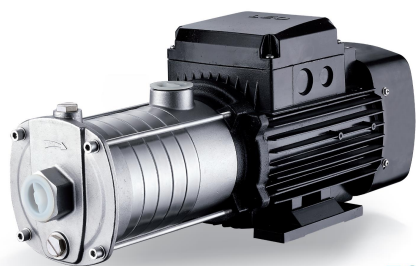
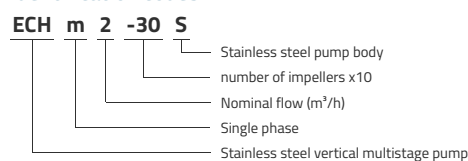
### Pompe

- Stainless steel shaft
- Max liquid temperature: +85°C
- Max suction height: 8 m
- Maximum operating pressure: 10 bars
- pH between 4 and 10

### Moteur

- IE3 motor
- Protection class: IP55
- Insulation class: F
- Maximum ambient temperature: +40°
- Integrated thermal protection for single-phase versions
- Altitude: up to 1000 m

### Identification codes

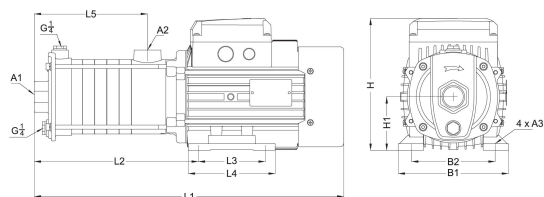


ECHS

## Technical data

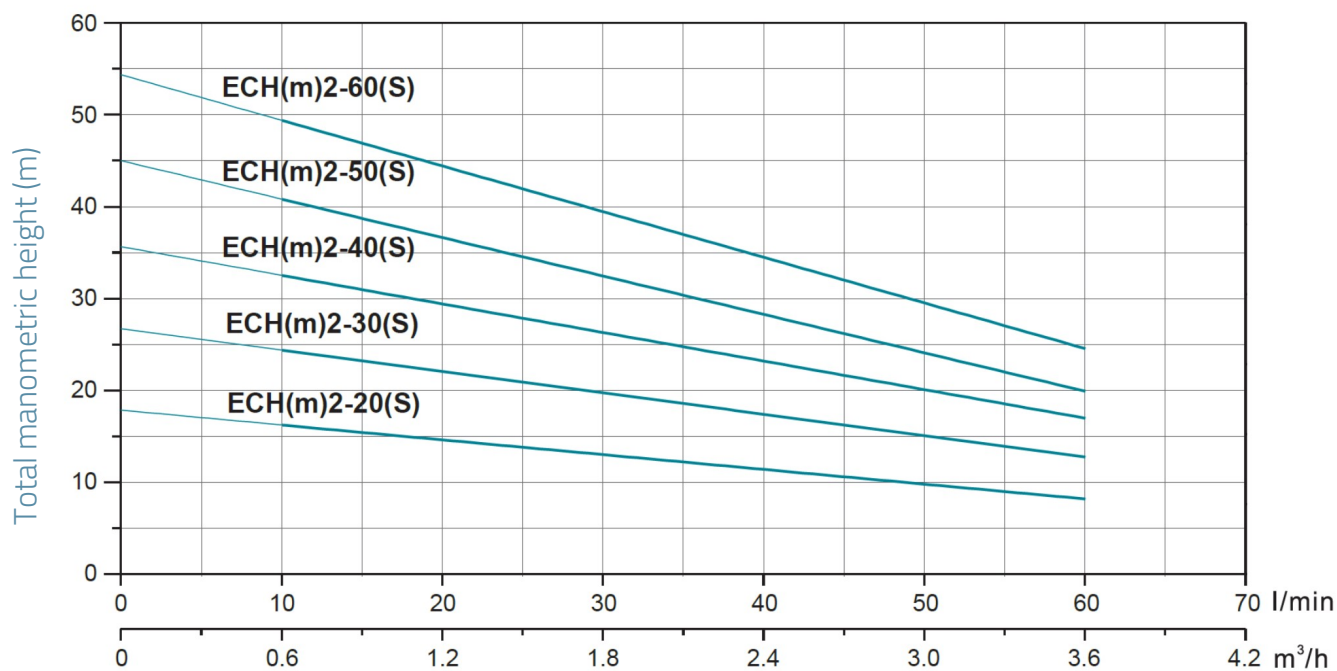
MODEL	kW	Q (m <sup>3</sup> /h)		0.6	1.2	1.8	2.4	3	3.6
		Q (l/min)		10	20	30	40	50	60
ECHm2-20	0.37	16	15	13	12	10	8		
ECH2-20	0.37	16	15	13	12	10	8		
ECHm2-20S	0.37	16	15	13	12	10	8		
ECH2-20S	0.37	16	15	13	12	10	8		
ECHm2-30	0.37	24	22	20	18	16	12		
ECH2-30	0.37	24	22	20	18	16	12		
ECHm2-30S	0.37	24	22	20	18	16	12		
ECH2-30S	0.37	24	22	20	18	16	12		
ECHm2-40	0.55	33	30	26	24	21	16		
ECH2-40	0.55	33	30	26	24	21	16		
ECHm2-40S	0.55	33	30	26	24	21	16		
ECH2-40S	0.55	33	30	26	24	21	16		
ECHm2-50	0.55	40	37	33	30	24	19		
ECH2-50	0.55	40	37	33	30	24	19		
ECHm2-50S	0.55	40	37	33	30	24	19		
ECH2-50S	0.55	40	37	33	30	24	19		
ECHm2-60	0.75	50	45	40	36	30	23		
ECH2-60	0.75	50	45	40	36	30	23		
ECHm2-60S	0.75	50	45	40	36	30	23		
ECH2-60S	0.75	50	45	40	36	30	23		

## Dimensions



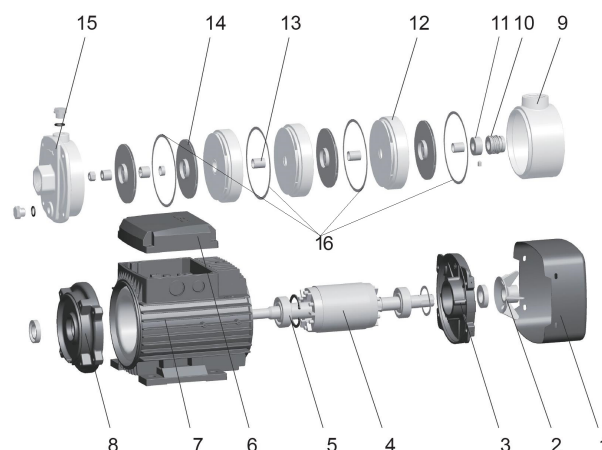
MODEL	L1	L2	L3	L4	L5	B1	B2	H	H1	A1	A2	A3
ECHm2-20	344.5	165.5	90	110	98.5	137	109	176.5	71	1	1	7
ECH2-20	344.5	165.5	90	110	98.5	137	109	176.5	71	1	1	7
ECHm2-20S	344.5	165.5	90	110	98.5	137	109	176.5	71	1	1	7
ECH2-20S	344.5	165.5	90	110	98.5	137	109	176.5	71	1	1	7
ECHm2-30	362.5	183.5	90	110	116.5	137	109	176.5	71	1	1	7
ECH2-30	362.5	183.5	90	110	116.5	137	109	176.5	71	1	1	7
ECHm2-30S	362.5	183.5	90	110	116.5	137	109	176.5	71	1	1	7
ECH2-30S	362.5	183.5	90	110	116.5	137	109	176.5	71	1	1	7
ECHm2-40	380.5	201.5	90	110	134.5	137	109	176.5	71	1	1	7
ECH2-40	380.5	201.5	90	110	134.5	137	109	176.5	71	1	1	7
ECHm2-40S	380.5	201.5	90	110	134.5	137	109	176.5	71	1	1	7
ECH2-40S	380.5	201.5	90	110	134.5	137	109	176.5	71	1	1	7
ECHm2-50	399.5	220.5	90	110	153.5	137	109	176.5	71	1	1	7
ECH2-50	399.5	220.5	90	110	153.5	137	109	176.5	71	1	1	7
ECHm2-50S	399.5	220.5	90	110	153.5	137	109	176.5	71	1	1	7
ECH2-50S	399.5	220.5	90	110	153.5	137	109	176.5	71	1	1	7
ECHm2-60	417.5	238.5	90	110	171.5	137	109	176.5	71	1	1	7
ECH2-60	417.5	238.5	90	110	171.5	137	109	176.5	71	1	1	7
ECHm2-60S	417.5	238.5	90	110	171.5	137	109	176.5	71	1	1	7
ECH2-60S	417.5	238.5	90	110	171.5	137	109	176.5	71	1	1	7

## Hydraulic performance



## Exploded view

No.	Type	Materials
1	Fan cover	08F steel
2	Fan	polypropylene
3	Rear cover	cast aluminum ZL102
4	Rotor	
5	Bearing	
6	Electric box cover	cast aluminum ZL102
7	Stator	
8	Lantern	cast iron HT200
9	Outlet diffuser	cast iron HT200
10	Mechanical seal	silicon carbide / graphite
11	Shim	AISI 304 stainless steel
12	Diffuser	AISI 304 stainless steel
13	Bearing	AISI 304 stainless steel
14	Impeller	AISI 304 stainless steel
15	Front cover	cast iron HT200



## Packaging

MODEL	Weight (kg)	Length L (mm)	Width W (mm)	Height H (mm)
ECHm2-20	11.5	420	215	243
ECH2-20	11.5	420	215	243
ECHm2-20S	11.5	420	215	243
ECH2-20S	11.5	420	215	243
ECHm2-30	11.8	420	215	243
ECH2-30	11.8	420	215	243
ECHm2-30S	11.8	420	215	243
ECH2-30S	11.8	420	215	243
ECHm2-40	13.2	420	215	243
ECH2-40	13.2	420	215	243
ECHm2-40S	13.2	420	215	243
ECH2-40S	13.2	420	215	243
ECHm2-50	13.7	420	215	243
ECH2-50	13.7	420	215	243
ECHm2-50S	13.7	420	215	243
ECH2-50S	13.7	420	215	243
ECHm2-60	14.6	420	215	243
ECH2-60	14.6	420	215	243
ECHm2-60S	14.6	420	215	243
ECH2-60S	14.6	420	215	243

