

KBZ(7.5-15kW) Construction site pump



Application

- Civil engineering
- Mines, quarries, sludge
- Wastewater treatment plant

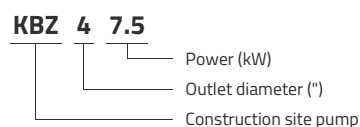
Pompe

- Max flow: 156 m³/h
- HMT max: 57 m
- Maximum immersion depth: 25 m
- Maximum liquid temperature: +40°C
- Maximum particle passage diameter: 11,5 mm pour KBZ4 and 19,5 mm pour KBZ6
- Top mechanical seal in silicon carbide / silicon carbide from 3.7 kW
- Barbed outlet as standard
- Accessories of the threaded or tapped connection outlet type
- Cable length: 20 m

Moteur

- Insulation class: B
- Protection class: IP68

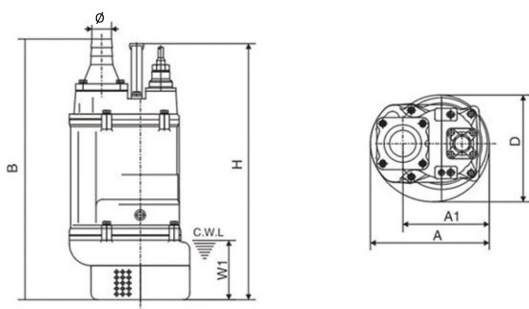
Identification codes



Technical data

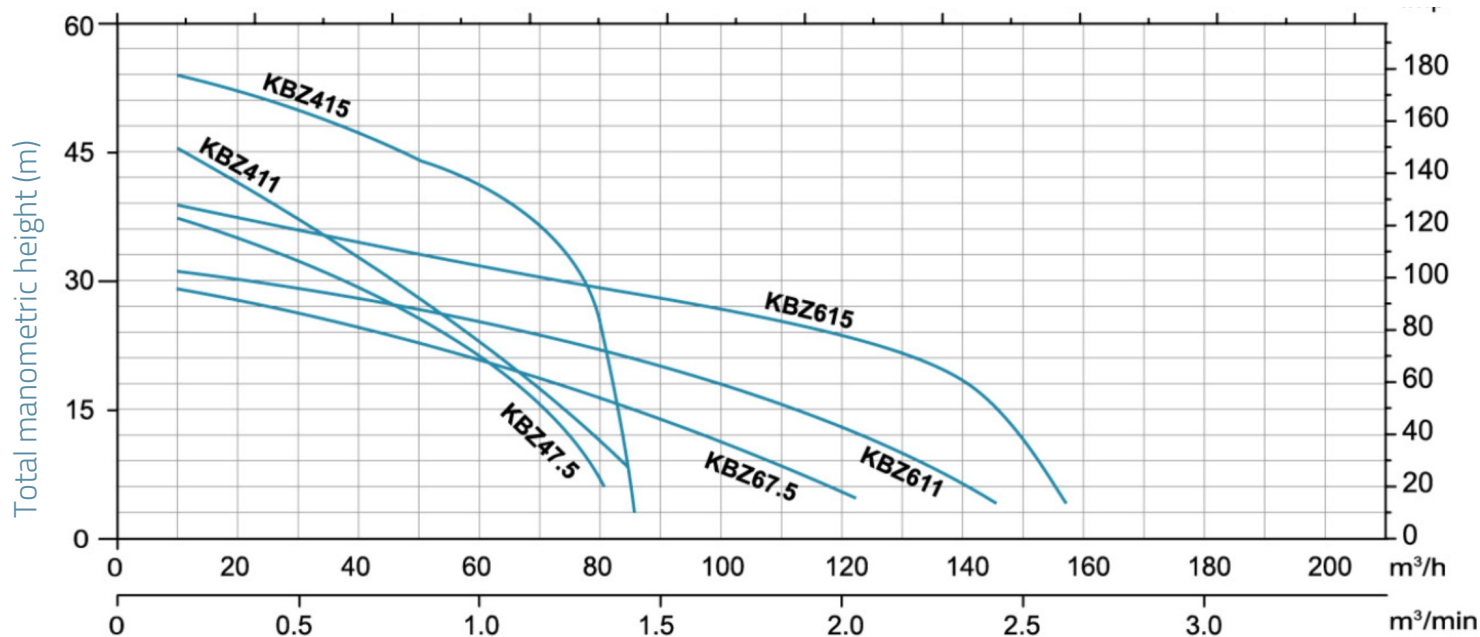
MODEL	kW	Q (m ³ /h)	0	10	20	30	40	50	60	70	80	90	100	110	120	130	140	150	160	
		Q (l/min)	0	167	333	500	667	833	1000	1167	1333	1500	1667	1833	2000	2167	2333	2500	2667	
KBZ47.5	7.5	40.3	40	38.7	36.9	34.3	29.1	21.3	12.5	2.7										
KBZ47.5F	7.5	40.3	40	38.7	36.9	34.3	29.1	21.3	12.5	2.7										
KBZ47.5M	7.5	40.3	40	38.7	36.9	34.3	29.1	21.3	12.5	2.7										
KBZ411	11	46.4	45.9	44.8	43.2	40.3	34.3	22	7.3											
KBZ411F	11	46.4	45.9	44.8	43.2	40.3	34.3	22	7.3											
KBZ411M	11	46.4	45.9	44.8	43.2	40.3	34.3	22	7.3											
KBZ415	15	55.3	54.8	53.6	51.9	49	44.7	34.5	21.3	6.7										
KBZ415F	15	55.3	54.8	53.6	51.9	49	44.7	34.5	21.3	6.7										
KBZ415M	15	55.3	54.8	53.6	51.9	49	44.7	34.5	21.3	6.7										
KBZ67.5	7.5	31.4	30.8	29	27.6	26	24.2	22.3	19.7	17.1	14.2	11.2	8	4.7						
KBZ67.5F	7.5	31.4	30.8	29	27.6	26	24.2	22.3	19.7	17.1	14.2	11.2	8	4.7						
KBZ67.5M	7.5	31.4	30.8	29	27.6	26	24.2	22.3	19.7	17.1	14.2	11.2	8	4.7						
KBZ611	11	31.8	31.4	31	30.3	29.6	28.7	27.7	26.3	24.7	22.7	20.2	17.4	14.2	10.9	7.5	3.9			
KBZ611F	11	31.8	31.4	31	30.3	29.6	28.7	27.7	26.3	24.7	22.7	20.2	17.4	14.2	10.9	7.5	3.9			
KBZ611M	11	31.8	31.4	31	30.3	29.6	28.7	27.7	26.3	24.7	22.7	20.2	17.4	14.2	10.9	7.5	3.9			
KBZ615	15	37.7	37.5	37.2	36.7	36	34.9	33.9	32.5	30.6	28.3	25.4	22.3	18.9	15.5	11.7	7.9	3.9		
KBZ615F	15	37.7	37.5	37.2	36.7	36	34.9	33.9	32.5	30.6	28.3	25.4	22.3	18.9	15.5	11.7	7.9	3.9		
KBZ615M	15	37.7	37.5	37.2	36.7	36	34.9	33.9	32.5	30.6	28.3	25.4	22.3	18.9	15.5	11.7	7.9	3.9		

Dimensions



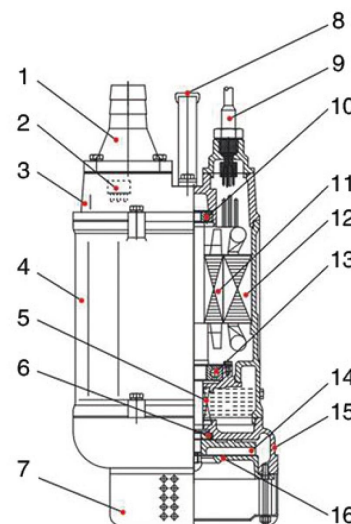
MODEL	∅	A	A1	B	D	H	W1
KBZ47.5	100	330	240	764	314	676	190
KBZ47.5F							
KBZ47.5M							
KBZ411	100	373	255	807	350	695	190
KBZ411F							
KBZ411M							
KBZ415	100	373	255	842	350	755	190
KBZ415F							
KBZ415M							
KBZ67.5	100	330	240	790	314	676	190
KBZ67.5F							
KBZ67.5M							
KBZ611	150	373	255	807	350	695	190
KBZ611F							
KBZ611M							
KBZ615	150	373	255	842	350	755	190
KBZ615F							
KBZ615M							

Hydraulic performance



Exploded view

No.	Type	Materials
1	Outlet fitting	cast iron HT200
2	Thermal protection	
3	Top cover	cast iron HT200
4	Jacket	cast iron HT200
5	Seal	
6	Mechanical seal	sil carb / sil carb, carbon / sil carb (<3kW)
7	Strainer	steel
8	Handle	steel
9	Power cable	
10	Bearing	
11	Rotor	
12	Stator	
13	Bearing	
14	Impeller	chrome alloy
15	Pump body	cast iron HT200
16	Inlet fitting	ductile cast iron



Packaging

MODEL	Weight (kg)	Length L (mm)	Width W (mm)	Height H (mm)
KBZ47.5	114	805	365	390
KBZ47.5F	0	0	0	0
KBZ47.5M	0	0	0	0
KBZ411	140	895	415	440
KBZ411F	0	0	0	0
KBZ411M	0	0	0	0
KBZ415	153	895	415	440
KBZ415F	0	0	0	0
KBZ415M	0	0	0	0
KBZ67.5	114	835	365	390
KBZ67.5F	0	0	0	0
KBZ67.5M	0	0	0	0
KBZ611	143	855	415	440
KBZ611F	0	0	0	0
KBZ611M	0	0	0	0
KBZ615	156	895	415	440
KBZ615F	0	0	0	0
KBZ615M	0	0	0	0

