

LGP Petrol engine pump



Application

- Transfer of clean water at a temperature between 0 and 40 ° C
- Usable for water supply and drainage for factories, mines, public facilities as well as for irrigation

Pompe

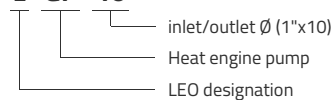
- New unique and ergonomic design
- Compact and transportable pump frame
- High quality motor with excellent performance and long service life
- Turbine design for high hydraulic efficiency
- Low fuel consumption
- Rust protected cast iron impeller and diffuser
- Maximum suction at 8 m, priming time at 5 m of 2 min
- Suction 25 mm - Blowing 38 mm

Moteur

- Single cylinder, 2-stroke, air-cooled
- Maximum power 1,6 CV
- Rotation speed: 7500 rpm

Identification codes

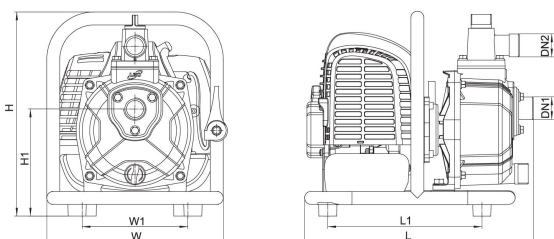
L GP 10



Technical data

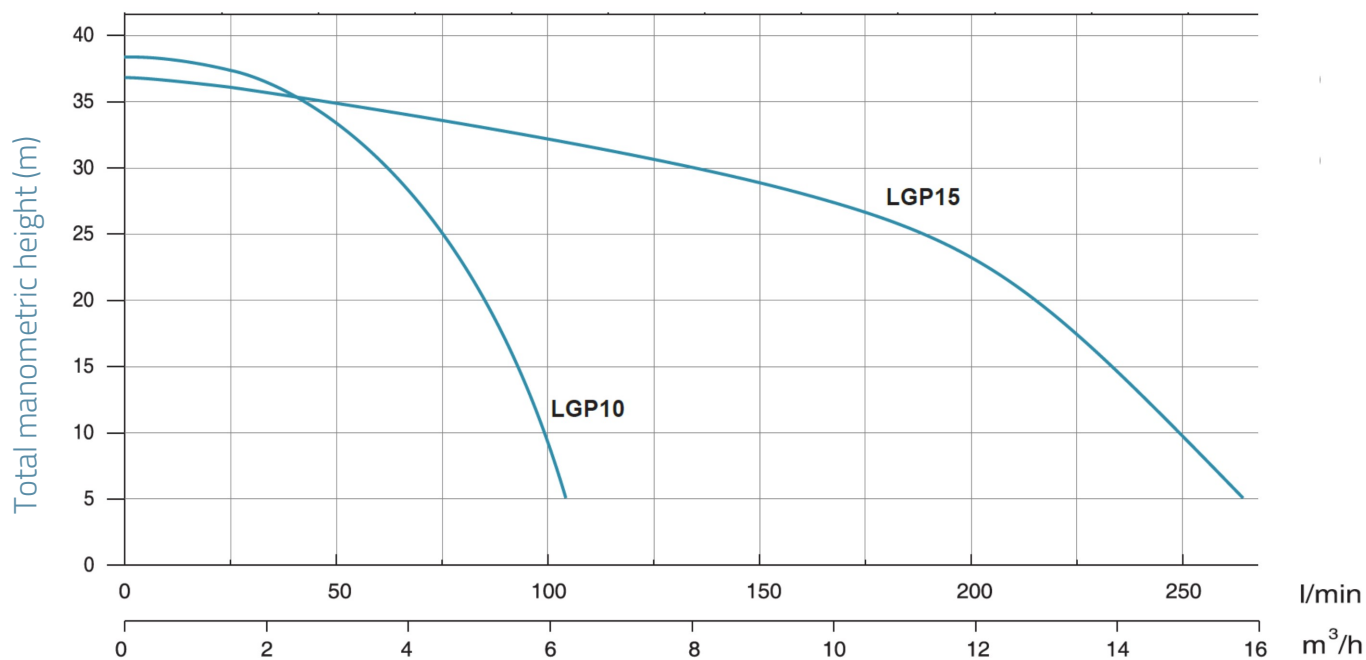
MODEL	kW	Q (m³/h)									
		0	2	4	6	8	10	12	14	16	
		Q (l/min)									
		0	33	67	100	133	167	200	233	267	
LGP10	1.2	38	35.7	26.9	6						
LGP15	1.2	37	36.8	34	33	30	24.5	23.5	15	5	

Dimensions



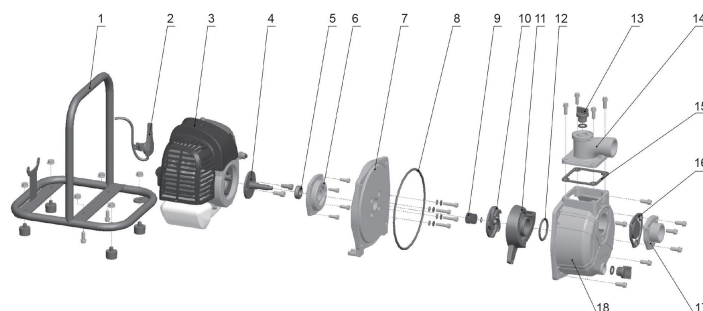
MODEL	DN1	DN2	L	W	H	L1	W1	H1
LGP10	1	1	336	279	300	217.5	155	157
LGP15	1½	1½	344	279	345	233	175	180

Hydraulic performance



Exploded view

No.	Type	Materials
1	Frame	steel
2	Throttle control	
3	Engine	
4	Coupling sleeve	
5	Bearing	
6	Coupling flange	aluminium
7	Pump bottom	aluminium
8	O-ring	nitrile rubber (NBR)
9	Mechanical seal	carbon / ceramic
10	Impeller	cast iron HT200
11	Diffuser	cast iron HT200
12	O-ring	nitrile rubber (NBR)
13	Plug	polypropylene
14	Outlet fitting	aluminium
15	Seal	nitrile rubber (NBR)
16	Non-return valve	nitrile rubber (NBR)
17	Inlet fitting	aluminium
18	Pump body	aluminium



Packaging

MODEL	Weight (kg)	Length L (mm)	Width W (mm)	Height H (mm)
LGP10	6.84	350	290	325
LGP15	8.27	355	290	681

