

LGP20i-A Petrol engine pump



Application

- Transfer of clean water at a temperature between 0 and 40 ° C
- Usable for water supply and drainage for factories, mines, public facilities as well as for irrigation

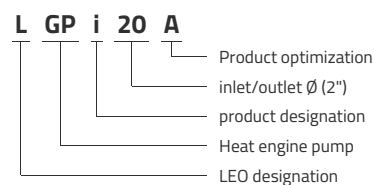
Pompe

- Solid cast iron pump body protected against rust (cataphoresis)
- Low consumption, increased respect for the environment
- Better sealing thanks to a specific mechanical seal
- Turbine design for high hydraulic efficiency
- Maximum suction at 8 m, priming time at 5 m of 2 min
- Suction and discharge 50 mm

Moteur

- Single cylinder, 4-stroke, air-cooled
- Maximum power 6,5 CV
- Engine cylinder capacity: 196 cm³
- Rotation speed: 3600 rpm

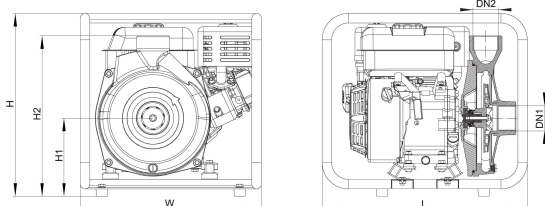
Identification codes



Technical data

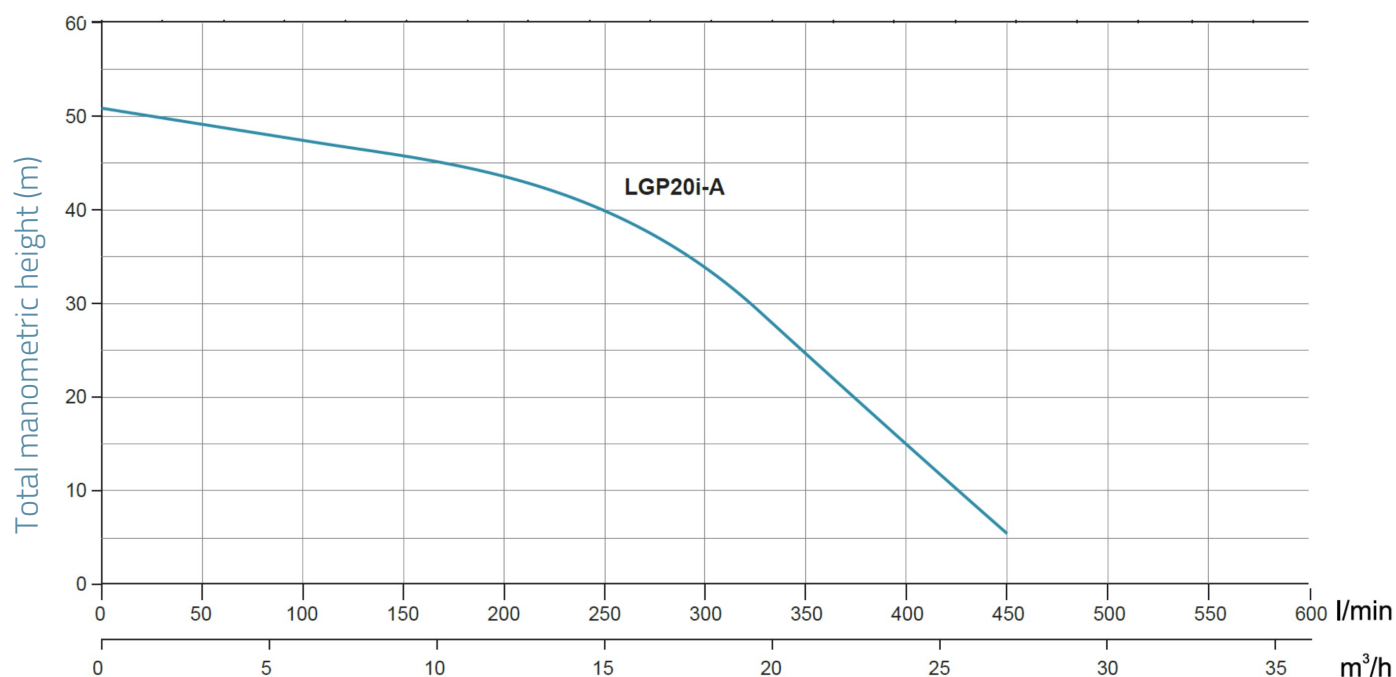
MODEL	kW	Q (m ³ /h)						
		0	5	10	15	20	25	
LGP20i-A	4.86	0	83	167	250	333	417	
		Q (l/min)	0	83	167	250	333	417
			51	48	46	40	28	11.5

Dimensions



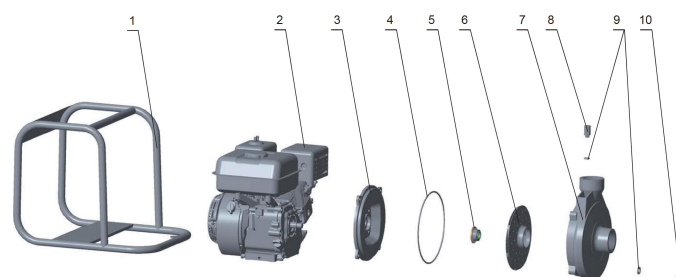
MODEL	DN1	DN2	L	W	H	H1	H2
LGP20i-A	2	2	476	420	440	180	370

Hydraulic performance



Exploded view

No.	Type	Materials
1	Frame	steel
2	Engine	
3	Pump bottom	cast iron HT200
4	O-ring	nitrile rubber (NBR)
5	Mechanical seal	carbon / ceramic
6	Impeller	aluminium
7	Pump body	cast iron HT200
8	Plug	brass HPb59-1
9	O-ring	nitrile rubber (NBR)
10	Plug	brass HPb59-1



Packaging

MODEL	Weight (kg)	Length L (mm)	Width W (mm)	Height H (mm)
LGP20i-A	30	470	433	450

