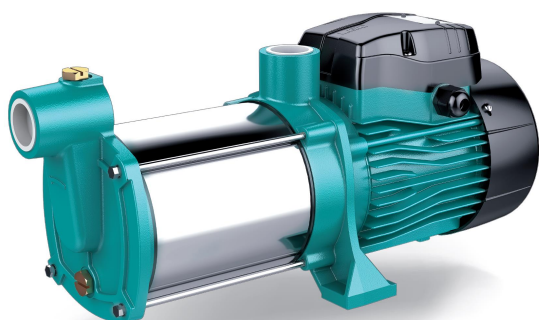


# 3(4,5)ACmS Centrifugal multistage cast iron pump



## Application

- Transfer of clear water or other liquids chemically and physically comparable to water
- Suitable for industrial use and water supply, long distance water transfer, etc.

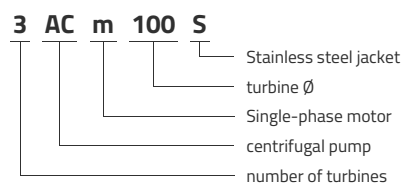
## Pompe

- Cast iron pump body
- Special anti-rust treatment (cataphoresis) pour la lanterne
- AISI 304 stainless steel shaft
- Maximum liquid temperature: +40°C
- Maximum suction height: 8 m

## Moteur

- Integrated thermal protection for single-phase motors
- Insulation class: F
- Protection class: IPX4
- Maximum ambient temperature: +40°C
- IE2 motor (three-phase, motor > 0.75 kW)

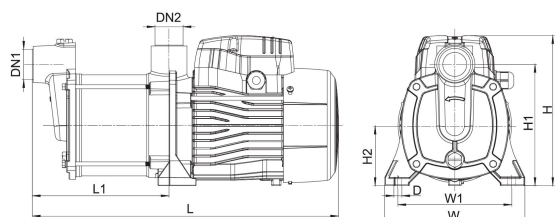
## Identification codes



## Technical data

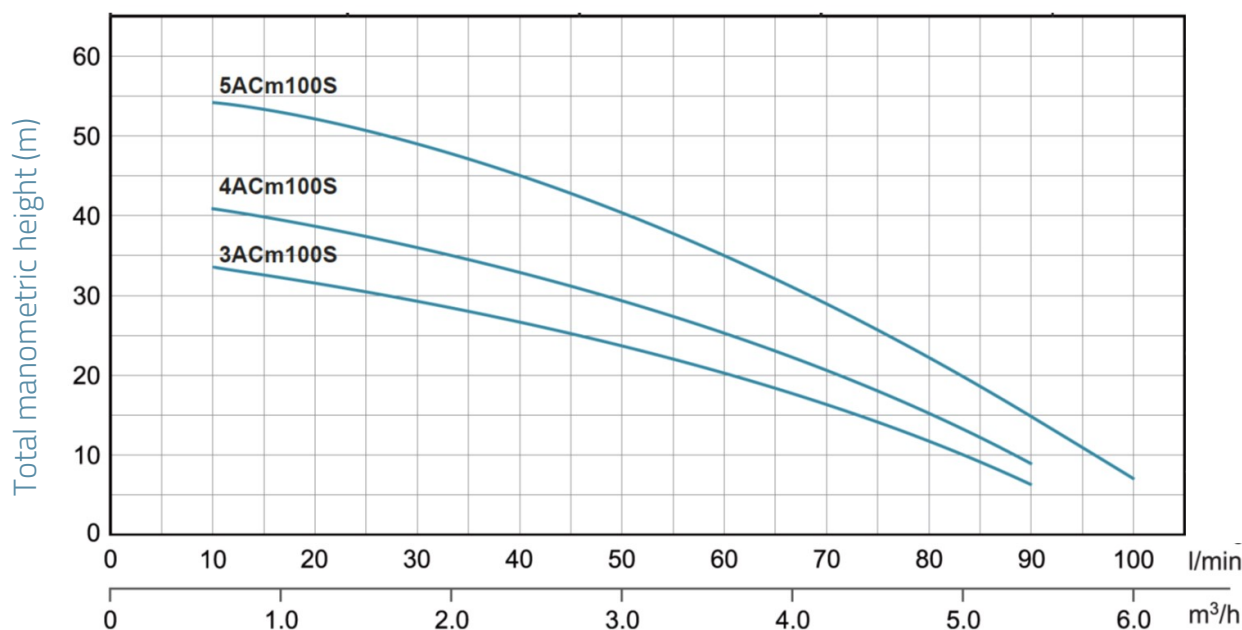
MODEL	kW	Q (m³/h)											
		0	0.6	1.2	1.8	2.4	3	3.6	4.2	4.8	5.4	6	
		Q (l/min)											
		0	10	20	30	40	50	60	70	80	90	100	
<b>3ACm100S</b>	0.6	35	33.5	31.5	29	26.5	24	20.5	16	12	7		
<b>3AC100S</b>	0.6	35	33.5	31.5	29	26.5	24	20.5	16	12	7		
<b>4ACm100S</b>	0.75	45	41	38.5	36	33	30	25.5	21	15	9		
<b>4AC100S</b>	0.75	45	41	38.5	36	33	30	25.5	21	15	9		
<b>5ACm100S</b>	0.9	55	54	52	49	45	40	35	29	22.5	15	8	
<b>5AC100S</b>	0.9	55	54	52	49	45	40	35	29	22.5	15	8	

## Dimensions



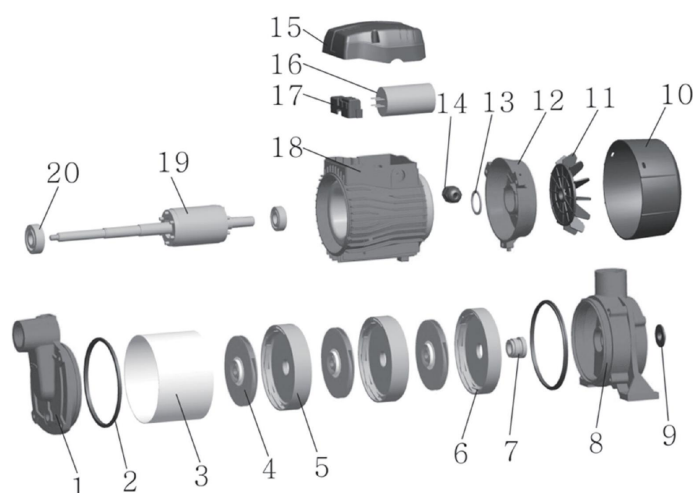
MODEL	DN1	DN2	L	L1	W	W1	H	H1	H2	D
<b>3ACm100S</b>	1	1	390	172	179	140	185	75		
<b>3AC100S</b>	1	1	390	172	179	140	185	75		
<b>4ACm100S</b>	1	1	414	196	179	140	185	75		
<b>4AC100S</b>	1	1	414	196	179	140	185	75		
<b>5ACm100S</b>	1	1	438	220	179	140	185	75		
<b>5AC100S</b>	1	1	438	220	179	140	185	75		

## Hydraulic performance



## Exploded view

No.	Type	Materials
1	Pump body	cast iron HT200
2	Oil seal	nitrile rubber (NBR)
3	Jacket	AISI 304 stainless steel
4	Impeller	noryl (PPD)
5	Diffuser	noryl (PPD)
6	Diffuser	noryl (PPD)
7	Mechanical seal	carbon / ceramic
8	Lantern	cast iron HT200
9	Rubber washer	nitrile rubber (NBR)
10	Fan cover	polypropylene
11	Fan	polypropylene
12	Rear cover	cast aluminum ZL102
13	Oil seal	65Mn steel
14	Cable gland	
15	Electric box cover	PA6 resin
16	Capacitor	
17	Terminal board	
18	Stator	
19	Rotor	
20	Bearing	



## Packaging

MODEL	Weight (kg)	Length L (mm)	Width W (mm)	Height H (mm)
3ACm100S	12.5	405	210	230
3AC100S	12.5	405	210	230
4ACm100S	13.5	430	210	230
4AC100S	13.5	430	210	230
5ACm100S	14.5	455	210	230
5AC100S	14.5	455	210	230

