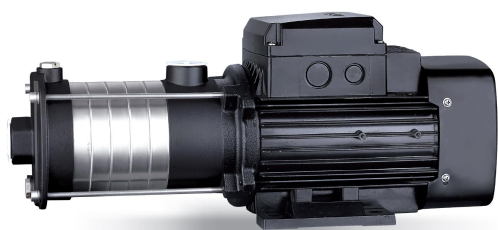


ECH15 Horizontal multistage stainless steel pump



ECH

Application

- Water supply for tall buildings, pumping stations, overpressure
- Washing stations, heating water circulation, air conditioning water circulation, water treatment systems
- Ultrafiltration, reverse osmosis, distillation systems, municipal swimming pools
- Irrigation: sprinkling, drip
- Industry
- Fire fighting systems

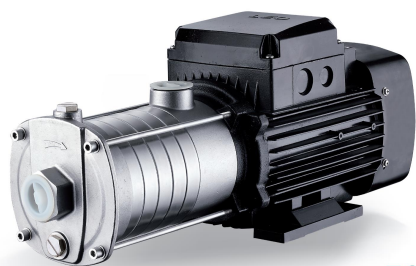
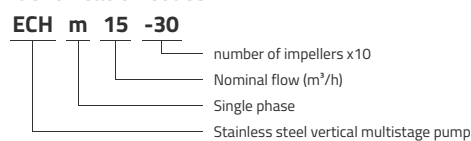
Pompe

- Stainless steel shaft
- Max liquid temperature: +85°C
- Max suction height: 8 m
- Maximum operating pressure: 5 bars
- pH between 4 and 10

Moteur

- IE3 motor
- Protection class: IP55
- Insulation class: F
- Maximum ambient temperature: +40°
- Integrated thermal protection for single-phase versions
- Altitude: up to 1000 m

Identification codes

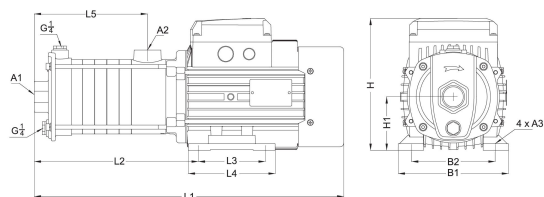


ECHS

Technical data

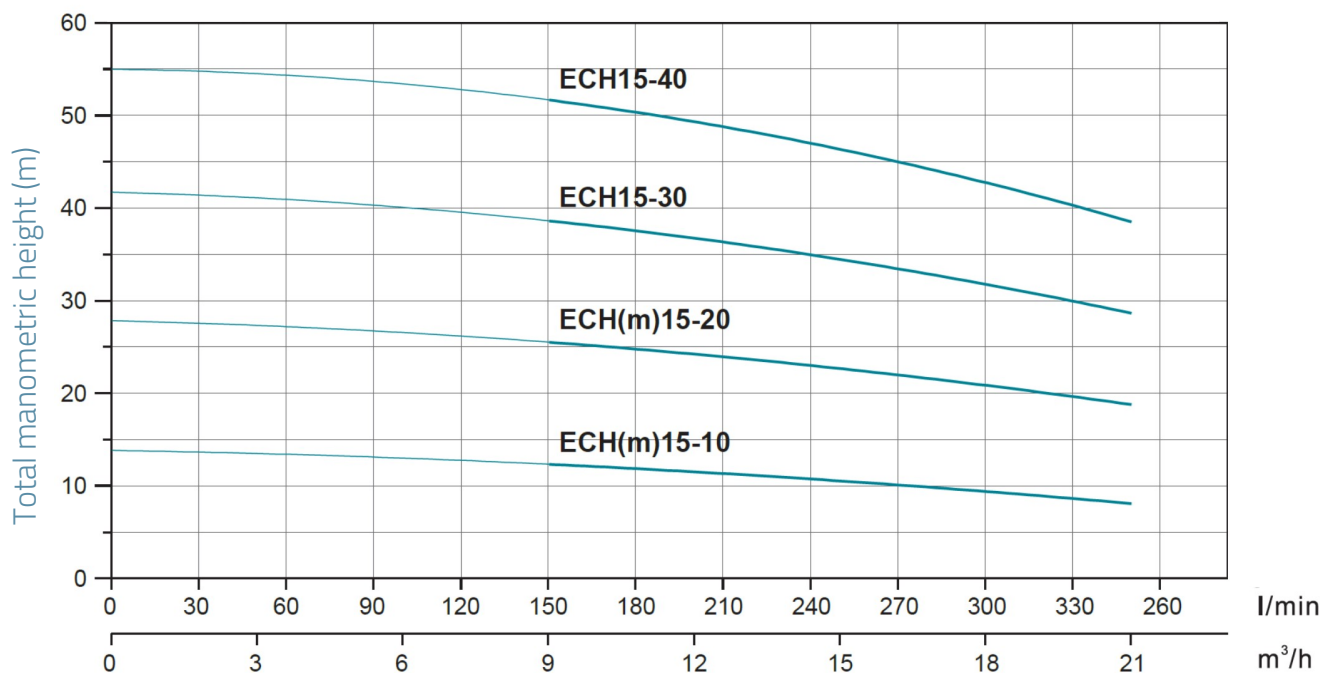
| MODEL | kW | Q (m ³ /h) | 9 | 12 | 15 | 18 | 21 |
|------------------|-----|-----------------------|------|------|------|------|-----|
| | | Q (l/min) | 150 | 200 | 250 | 300 | 350 |
| ECHm15-10 | 1.1 | 12.4 | 11.6 | 10.6 | 9.4 | 8.2 | |
| ECH15-10 | 1.1 | 12.4 | 11.6 | 10.6 | 9.4 | 8.2 | |
| ECHm15-20 | 2.2 | 25.6 | 24.1 | 22.7 | 21.1 | 18.8 | |
| ECH15-20 | 2.2 | 25.6 | 24.1 | 22.7 | 21.1 | 18.8 | |
| ECH15-30 | 3 | 38.7 | 36.9 | 34.9 | 31.9 | 28.5 | |
| ECH15-40 | 4 | 51.8 | 49.7 | 46.8 | 42.9 | 38.3 | |

Dimensions



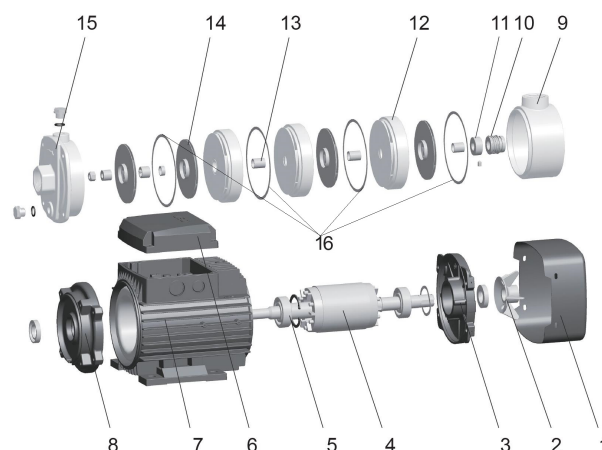
| MODEL | L1 | L2 | L3 | L4 | L5 | B1 | B2 | H | H1 | A1 | A2 | A3 |
|------------------|-----|-------|-----|-----|-------|-----|-----|-------|-----|----|----|----|
| ECHm15-10 | 451 | 233.5 | 100 | 130 | 139.5 | 165 | 125 | 204.5 | 80 | 2 | 2 | 10 |
| ECH15-10 | 451 | 233.5 | 100 | 130 | 139.5 | 165 | 125 | 204.5 | 80 | 2 | 2 | 10 |
| ECHm15-20 | 510 | 222 | 125 | 150 | 139.5 | 180 | 140 | 217.5 | 90 | 2 | 2 | 10 |
| ECH15-20 | 510 | 222 | 125 | 150 | 139.5 | 180 | 140 | 217.5 | 90 | 2 | 2 | 10 |
| ECH15-30 | 560 | 272 | 125 | 150 | 189.5 | 180 | 140 | 247.5 | 90 | 2 | 2 | 10 |
| ECH15-40 | 616 | 336.5 | 140 | 180 | 230 | 205 | 160 | 224.5 | 100 | 2 | 2 | 12 |

Hydraulic performance



Exploded view

| No. | Type |
|-----|--------------------|
| 1 | Fan cover |
| 2 | Fan |
| 3 | Rear cover |
| 4 | Rotor |
| 5 | Bearing |
| 6 | Electric box cover |
| 7 | Stator |
| 8 | Lantern |
| 9 | Outlet diffuser |
| 10 | Mechanical seal |
| 11 | Shim |
| 12 | Diffuser |
| 13 | Bearing |
| 14 | Impeller |
| 15 | Front cover |



Packaging

| MODEL | Weight (kg) | Length L (mm) | Width W (mm) | Height H (mm) |
|-----------|-------------|---------------|--------------|---------------|
| ECHm15-10 | 22.7 | 503 | 235 | 268 |
| ECH15-10 | 22.7 | 503 | 235 | 268 |
| ECHm15-20 | 30.3 | 557 | 245 | 283 |
| ECH15-20 | 30.3 | 557 | 245 | 283 |
| ECH15-30 | 32.2 | 618 | 245 | 283 |
| ECH15-40 | 39.6 | 687 | 245 | 290 |

